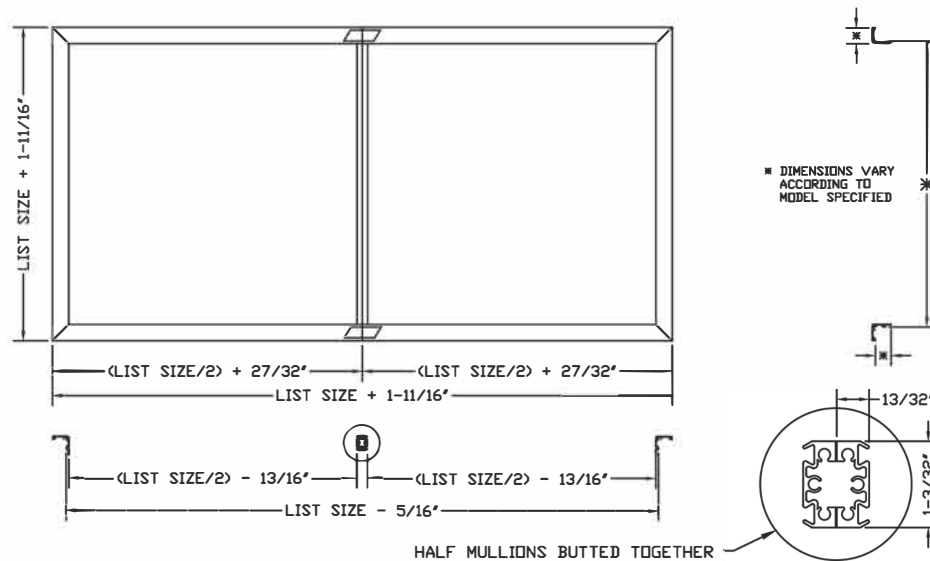


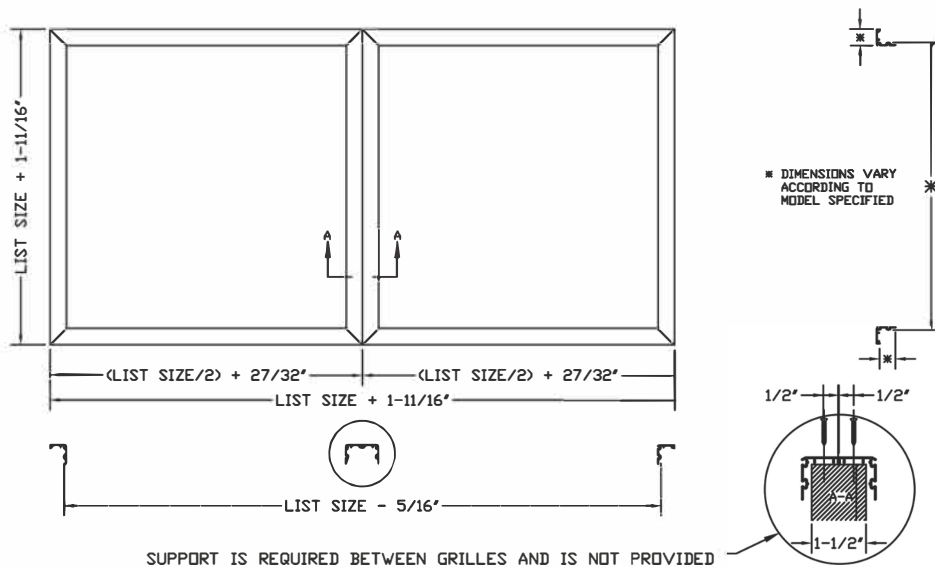
HALF MULLION

Dayus offers a Half Mullion on several product lines to maintain the aesthetics of a single piece construction.



FULL FRAME

Where Half Mullion is unavailable or additional rigidity is required, Dayus can manufacture two Full Frame pieces to fit the opening.



Two-Piece Construction is often ordered by customers for a few reasons:

- **Save on Shipping Cost** - Though Dayus may be able to build in one piece, the order may require a truck shipment or additional handling charges. By utilizing two-piece construction, a courier shipment can be accommodated to save on transit cost.
- **Exceed Maximum Limitations** - We can build LARGE products, but even we have our limitations. Two-piece construction allows us to exceed them to meet your biggest needs.
- **Easier to Handle/Install** - While installing large products, two pieces are easier for an individual to handle without exertion.

Dayus uses the following formula to recommend two-piece construction methods:

Longest List Dimension + 2x Smallest List Dimension < 102"

Except Filter Grilles, where Longest List Dimension + 2x Smallest List Dimension < 90"