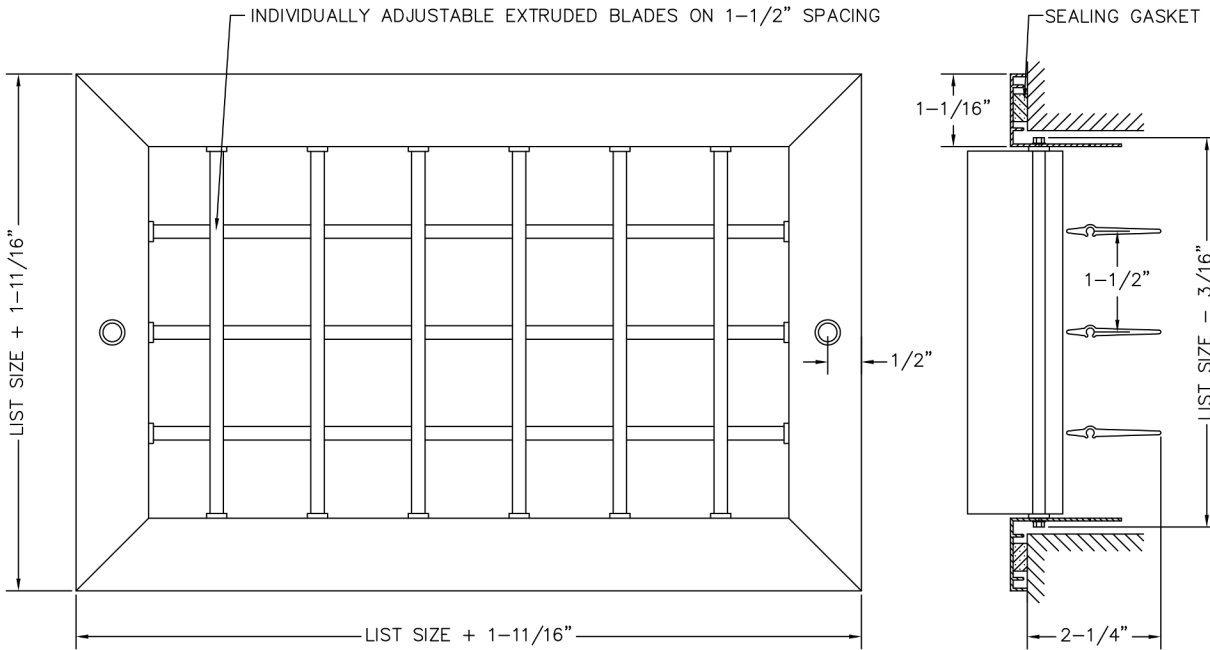
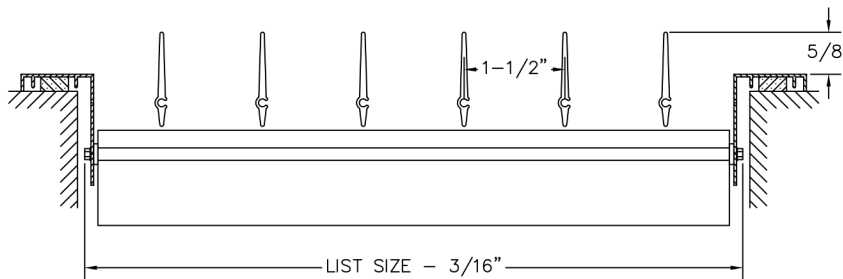




- Individually adjustable vertical and horizontal blades with 1-1/2" spacing.
- Fully extruded, high quality aluminum blades with semi-airfoil design.
- High quality aluminum extruded frame.
- Sealing gasket used to prevent streaking on walls or ceiling.
- Countersunk #6 screw hole mounting c/w painted screws.
- Mullions used for dimensions over 26" in size.
- Available on 2" increments as standard. Custom sizes available down to 1/16" increments.
- Available with durable powder coat finish.



**3 DAY SHIP**  
ANY SIZE. ANY MODEL. GUARANTEED



**Additional Options**

- TB** - No Screw Holes
  - R** - Recessed Blades
  - G** - Gang Operator on Rear Blades
  - R-G** - Recessed Blades & Gang Operator
- on \_\_\_\_\_ (Front/Back/Both)

**1. Specify the Length x Height Dimensions**

Inches    MM \_\_\_\_\_ x \_\_\_\_\_

**2. Select a Finish**

- W** - White
- FB** - Flat Black
- S** - Silver
- Special:** \_\_\_\_\_
- B** - Brown
- M** - Mill

**3. Select a Lead Time**

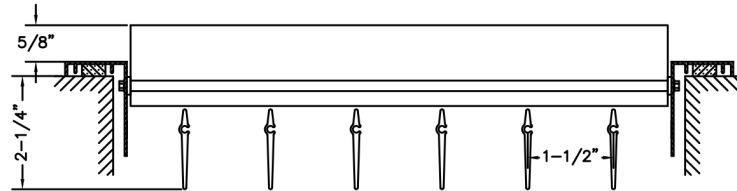
- 3 Day Ship
- Next Friday
- Standard Delivery

**Project / Location:** \_\_\_\_\_  
**Architect:** \_\_\_\_\_  
**Engineer:** \_\_\_\_\_  
**Contractor:** \_\_\_\_\_

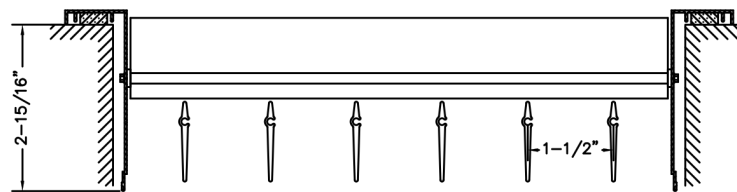


## OPTIONS

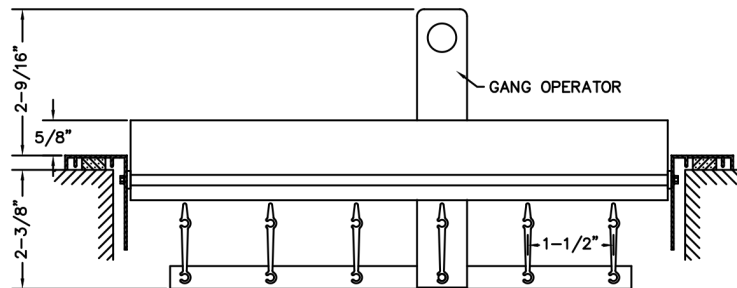
**Standard**  
No additional option



**-R**  
Recessed Blades

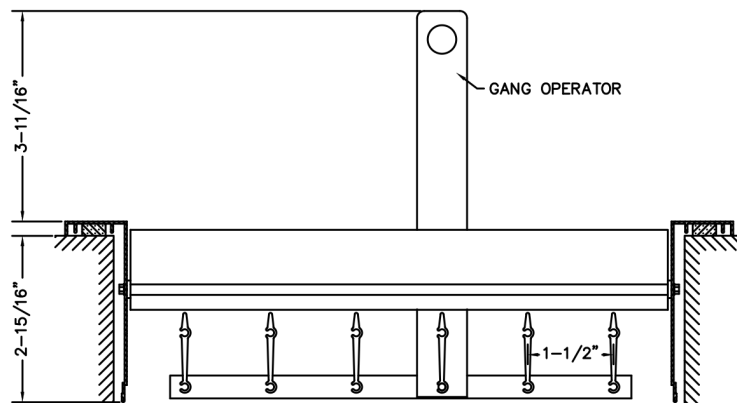


**-G**  
Gang Operator



Gang operator can extend up to 2-9/16".  
An extra gang operator required every 26" on dimension operator installed on.

**-R-G**  
Recessed Blades  
with Gang Operator



Gang operator can extend up to 3-11/16".  
An extra gang operator required every 26" on dimension operator installed on.